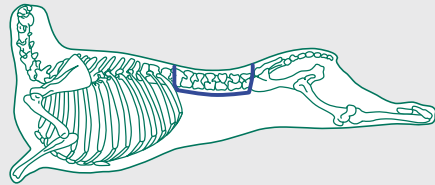


# Saddle without flank – fully trimmed

Code:

Loin L033

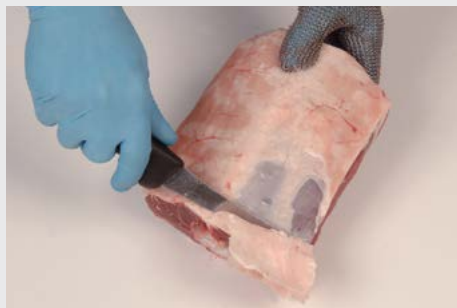


1. Position of the saddle.

2. Remove the legs by cutting between the last two vertebrae.

3. Remove the saddle by cutting along the ribs and sawing through the vertebrae.

4. Remove excess fat deposits and



5. back fat.

6. Saddle without flank fully trimmed.

